

**Prepared for:** OCS Home Health  
**City:** Seattle

**999999** **Affiliation:** Free Standing  
**State:** WA

**2008 HomeCare Elite Status:** Top 100 HomeCare Elite

**Report Interpretation Guide**

Data in this report is representative of similarly affiliated organizations. For example, if you are facility-based, norms are inclusive of other facility-based agencies only.

**Quality of Care**

- Results are based on Home Health Compare (HHC) data published in September 2008.
- These measures demonstrate current performance compared to HomeCare Elite agencies in your state that share your affiliation, and to the overall state norm.

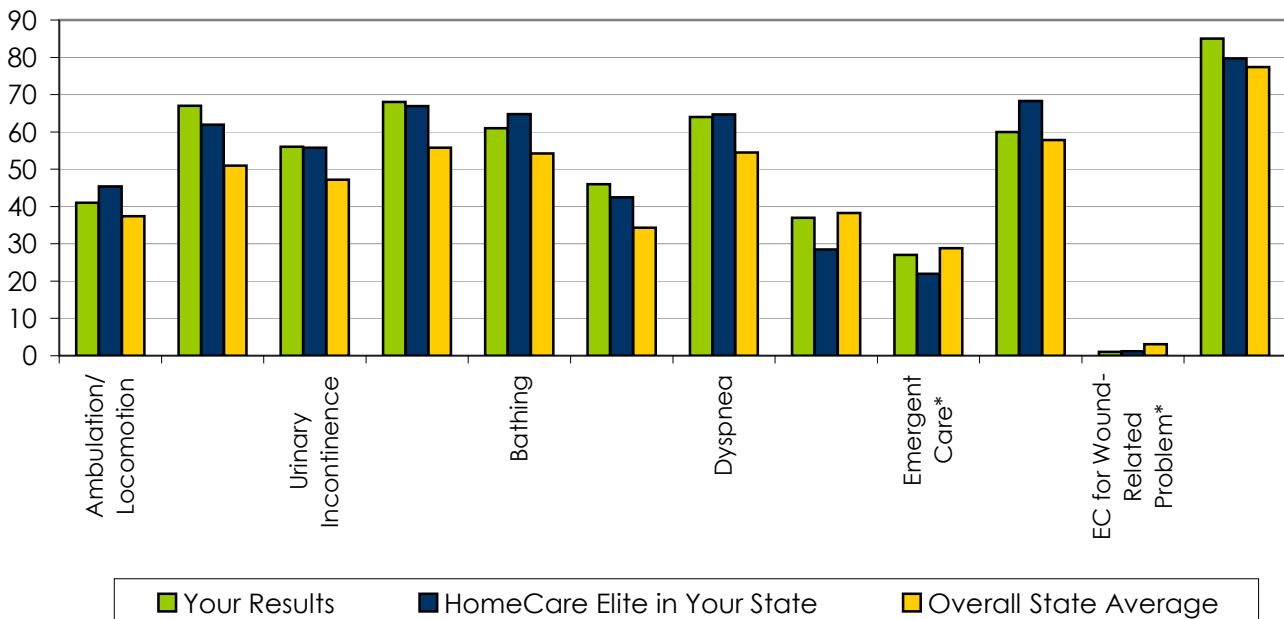
**Quality Improvement (QI)**

- Results are based on comparing HHC data published in September 2007 to that published in September 2008.
- The QI graph shows how your agency's performance has changed over time, and if your change is similar to that of the HomeCare Elite and the average agencies in your state.
- It is important to note that all positive numbers reflect improvement, even for measures where lower rates are better (hospitalization and emergent care). For those two measures, a positive change value represents a decrease in the rate.

**Financial Performance**

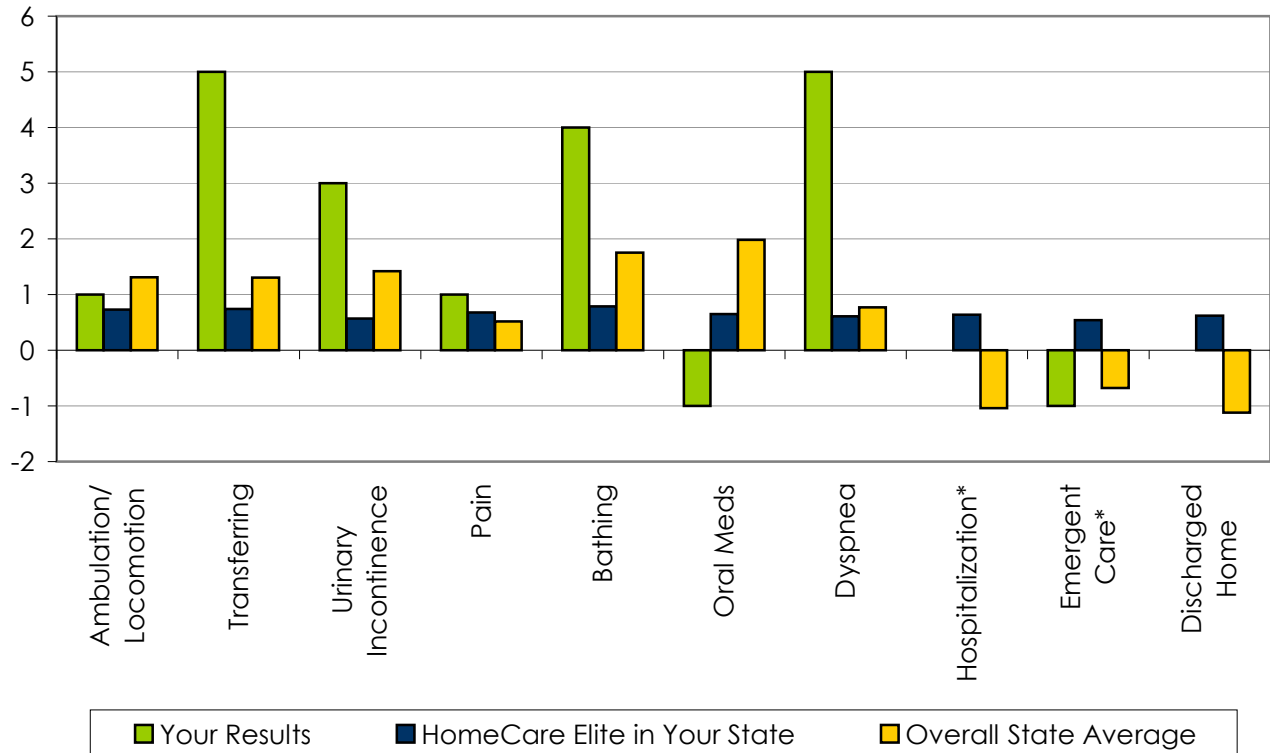
- Results are based on Medicare Cost Report data published in 2008.
- Fiscal year 2007 data was used when available; when 2007 data was not available, fiscal year 2006 data was used (after being adjusted, based on median change rates).
- Overall net income was used to evaluate free standing agencies. Medicare net income (excluding supply costs) was used to evaluate hospital-based agencies.
- The Financial Performance graph provides insight into how your profit margin compares to others - both HomeCare Elite and average agencies - in your state.

**Quality of Care**



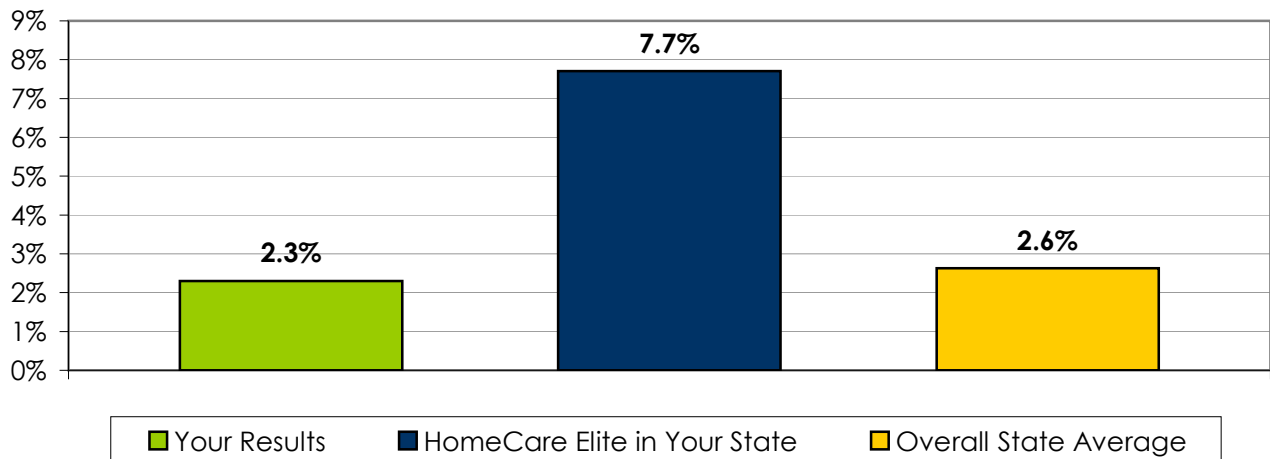
\*Lower is better; all others, higher is better

**Quality Improvement**



\*Greater than zero (0) indicates **improvement** in all indicators, even when a lower rate is better; less than zero(0) indicates worsening

**Financial Performance**



Data for your organization came from the cost reports for fiscal year 2007